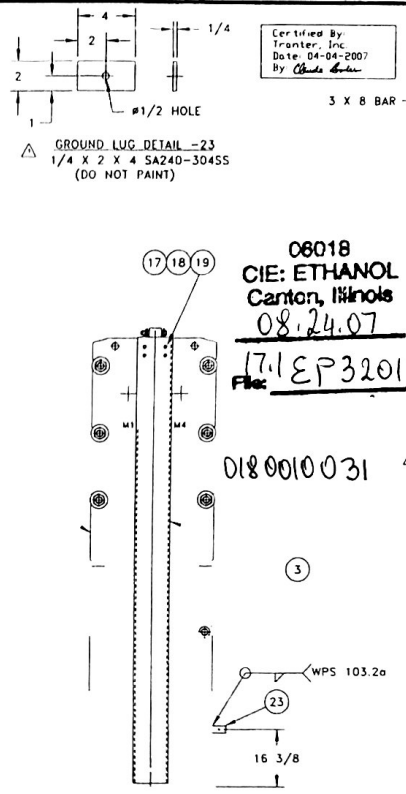
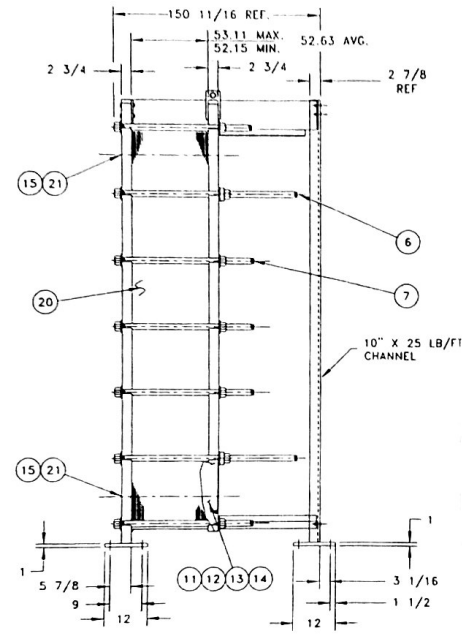
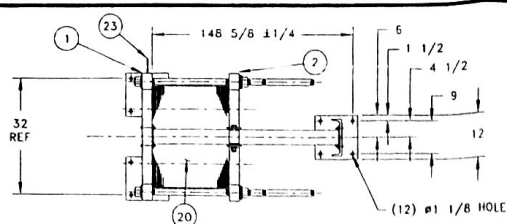
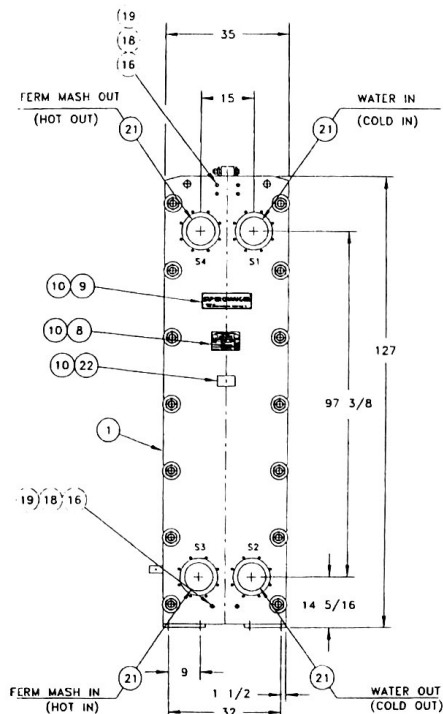


NOTES CONTINUED

- 8. PLATES ARE TO BE ELECTROPOLISHED.
- 9. PERMANENTLY ATTACH TO FRAME METAL TAG SHOWING COLD IN, COLD OUT, HOT IN, HOT OUT
- 10. DOCUMENT CONTROL REQUIRED. DOCUMENT PACKAGE TO SHIP SEPARATELY CONSISTING OF ASME PRESSURE CALCULATIONS, SEISMIC LOAD CALCULATIONS & CERTIFIED DRAWINGS.
- 11. UNIT DESIGNED FOR SEISMIC LOADING PER BOCA 96 Av=0.05, A0=0.05 80 MPH WIND LOADING.



PARTS LIST			
ITEM NO.	DESCRIPTION	DRAWING NO.	NO. REQ'D.
1	STATIONARY FRAME ASS'Y SA-516-70N	D-206083	1
2	MOVEABLE FRAME ASS'Y SA-516-70N	D-203861-1	1
3	GUIDE BAR SUPPORT	D-206084	1
4	UPPER GUIDE BAR (WORKING LGTH. 145)	D-203490-3	1
5	LOWER GUIDE BAR (WORKING LGTH. 145)	D-204488-3	1
6	BOLT ASS'Y. (WORKING LGTH. 120)		
7	2 DIA. CARBON STEEL SA-193-B7	D-202779-B	4
8	2 DIA. CARBON STEEL SA-193-B7	D-202779	10
9	DATA NAMEPLATE	B-202112	1
10	NAMEPLATE	B-200734	1
11	METAL TACK FASTENER	A-203187	12
12	SHROUD SET ("L" DIM: 55 7/8)	D-203866	1
13	SHROUD, STUD	A-200830	32
14	SHROUD, NUT	A-200831	32
15	SHROUD, WASHER	A-200832	32
16	NOZZLE PROTECTOR (NOT SHOWN)	D-204774-5	4
17	GUIDE BAR BOLT	B-203480-B	6
18	GUIDE BAR BOLT	B-203480-A	6
19	GUIDE BAR NUT	B-203481	12
20	GUIDE BAR WASHER	B-203482	12
21	PLATE		159
22	NOZZLE B STR ("S" FRAME) SA312-1P316L-WLD	B-6-115687-10	4
23	3 X 5 X 16 GA 30455 TAG		1
	GROUNDING LUG	DETAIL	1

STUDDED POST ANSI B16.5 BOLT HOLE DIMENSIONS	
SIZE	8"
A	150 LB
B	3/4-10 UNC 2B
C	B
	13/16

SPECIFICATIONS		"U" CODE STAMP DATA	
DESIGN PRESSURE:	150 PSI	M.A.W.P.:	150 PSI AT 300 °F
TEST PRESSURE:	195 PSI	M.D.M.T.:	-20 °F AT 150 PSI
DESIGN TEMP.:	300 °F	MEDIUM:	FERM MASH/WATER
NO. OF PLATES:	159	FORM:	U-1 NO. REQ'D. 1
SURFACE AREA:	2638.33 SQ.FT.	LOCATION OF INSTALLATION:	CENTRAL ILLINOIS ETHANOL
WEIGHT:	14355 LBS.		CANTON, IL

- NOTES
- FLEXIBILITY IN PIPING IS NECESSARY TO PROVIDE FOR THERMAL EXPANSION. WHERE APPLICABLE, PIPE VIBRATIONS AND FLUID PULSATIONS SHOULD BE ELIMINATED FOR FATIGUE AND CYCLIC TYPE OF APPLICATIONS.
 - FABRICATE PER ASME CODE SECTION VIII, DIV. 1 SPECS., LATEST EDITION AND ADDENDA. "U" STAMP YES NAT'L BD. YES
 - METAL STAMP ON ITEM #22: P.O. NO: 601870722 PROJECT NO: 08018 CENTRAL ILLINOIS ETHANOL CANTON, IL EP-3201-B FERMENTER COOLER
 - CHANNEL VELOCITIES: H/S 1.90 fps C/S 1.64 fps
 - MATERIALS PART NO.: GF-187-115687-6
 - MAXIMUM FRAME CAPACITY = 199 PLATES (25% EXPANSION).
 - PLATE GAP: H/S 8.0mm CS 8.0mm

TRANTER
TRANTER, Inc., Wichita Falls, Texas

PROPERTY OF TRANTER, INC. AND NOT TO BE REPRODUCED WITHOUT THEIR CONSENT HERE USED OR PARTIALLY REPRODUCED TO THE EXTENT OF TRANTER, INC.

DATE: 9-18-06

SCALE: 1" = 1'-0"

NOZZLE LOCATION DIA. HOLE

S1	8 11/16
S2	8 11/16
S3	8 11/16
S4	8 11/16

THIRD ANGLE PROJECTION

DO NOT SCALE THIS DRAWING

SCALE: 1" = 1'-0"

DATE: 9-18-06

NOZZLE LOCATION DIA. HOLE

M1	
M2	
M3	
M4	

"S" FRAME "M" FRAME

ELEMENT COMPOSITION DIAGRAM

NOTES:
GASKETS FACE "S" FRAME

PLATE HANGING ASSEMBLY					
Plate Sequence	Gasket Material	Piercing	Gluing	Hanging	
1	EPDM	1234	LL Start	K	
2, 4 .. 154, 156	EPDM	1234	LL	L	
3, 5 .. 155, 157	EPDM	1234	LL	K	
	EPDM	1234	LL	L	
	EPDM	0000	LL End	K	

CERTIFIED PRINT CHECK
CHK. BY: *[Signature]*
DATE: 8/27/07
LURGI, INC.

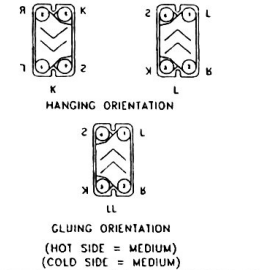
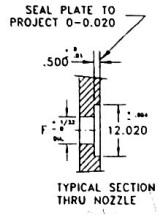


PLATE ASSEMBLY SPECIFICATIONS

Oly	Gasket Material	Theta/Piercing	Gluing
1	EPDM	1234	LL Start
157	EPDM	1234	LL
1	EPDM	0000	LL End

SECTION	FLUID NAME	FLOW RATE (LB/HR)	INLET TEMP. °F	OUTLET TEMP. °F	PRESSURE DROP (PSI)	PLATE ARRANGEMENT	PLATE*	GASKET MATERIAL	NOZZLE
1	FERM MASH	2000901	93	88	8.69	79M X 1	316	EPDM	316L
	WATER	1624012.08	83	88	4.86	79M X 1	316	EPDM	316L

PERFORMANCE (250288)